



## District 10 Code Analysis - 12/01/2021

Data extracted for Code complaint cases opened between October 1, 2019 -September 30st, 2020

### All Complaint Cases

Reported Complaint Type	Total	Commercial	Neighborhood	Multifamily
Land Use	1,314	202	1,004	108
Property Abatement	663	46	583	34
Structure Condition	323	12	170	141
Work Without Permit	96	2	92	2
SWS Chp 15	6	-	6	-
<b>Total</b>	<b>2,402</b>	<b>262</b>	<b>1,849</b>	<b>285</b>
<b>Total Percent of Citywide Complaints</b>	<b>6.4%</b>	<b>3.6%</b>	<b>8.3%</b>	<b>3.6%</b>

### Repeat Offender, Short Term Rental, and Rooming and Boarding Home Complaint Cases

\*Filtering complaint cases by complaints occurring at Repeat Offender Properties (ROP), Short Term Rentals (STR), or Rooming and Boarding Homes (RBH). Austin Code categorizes them as Operating Licenses types.

Case Code	Total	Commercial	Neighborhood	Multifamily
Repeat Offender Properties	95	-	-	95
Short Term Rentals	222	3	208	11
Rooming and Boarding Homes	2	1	1	-
<b>Total</b>	<b>319</b>	<b>4</b>	<b>209</b>	<b>106</b>
<b>Total Percent of Citywide Complaints</b>	<b>0.9%</b>	<b>0.1%</b>	<b>0.9%</b>	<b>1.3%</b>

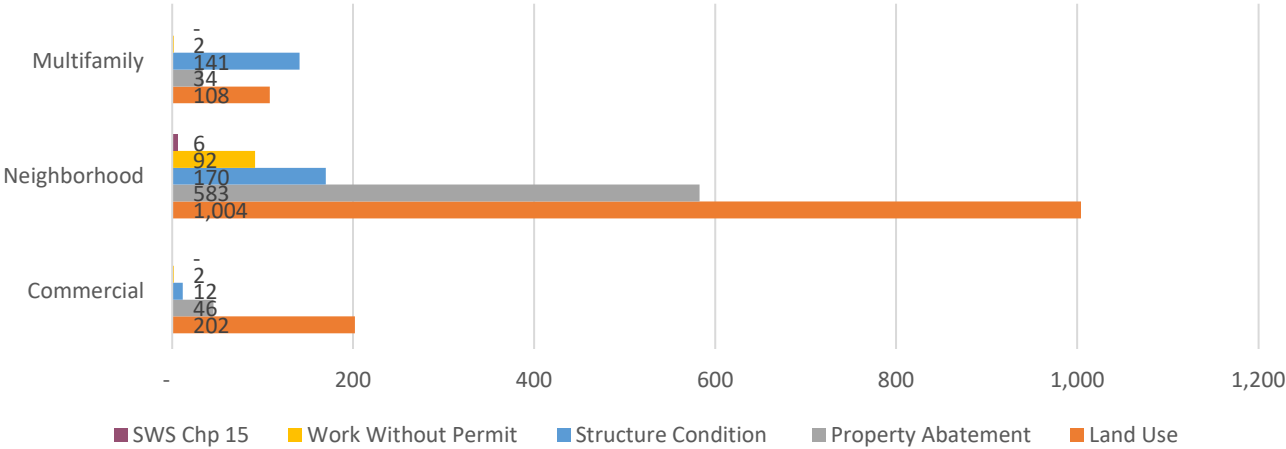
Reported Complaint Type	Total	ROP	STR	RBH
Land Use	1,314	4	222	2
Property Abatement	663	-	-	-
Structure Condition	323	91	-	-
Work Without Permit	96	-	-	-
SWS Chp 15	6	-	-	-
<b>Total</b>	<b>2,402</b>	<b>95</b>	<b>222</b>	<b>2</b>
<b>Total Percent of Citywide Complaints</b>	<b>6.4%</b>	<b>3.6%</b>	<b>7.8%</b>	<b>1.3%</b>

### Council District Matrix - All Complaint Cases

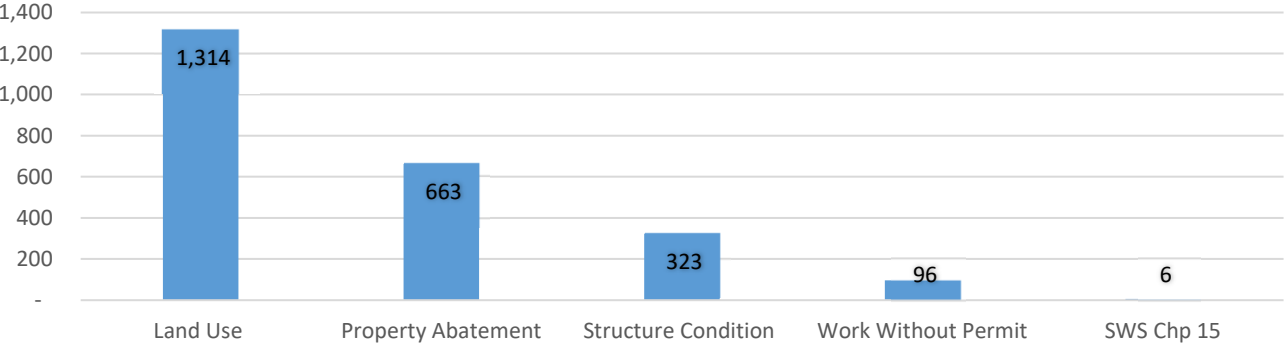
This matrix shows your Council District's percentage of total complaint cases in comparison with others.

Council District	% Total	% Commercial	% Neighborhood	% Multifamily
District 1	14.2%	9.7%	15.9%	13.6%
District 2	9.1%	9.1%	10.8%	4.4%
District 3	14.3%	21.6%	11.9%	14.4%
District 4	12.2%	10.7%	10.2%	19.0%
District 5	9.5%	7.0%	11.1%	7.5%
District 6	4.8%	3.3%	6.1%	2.4%
District 7	9.3%	12.1%	8.8%	7.9%
District 8	3.8%	3.0%	5.1%	1.0%
District 9	16.3%	19.8%	11.7%	26.2%
District 10	6.4%	3.6%	8.3%	3.6%

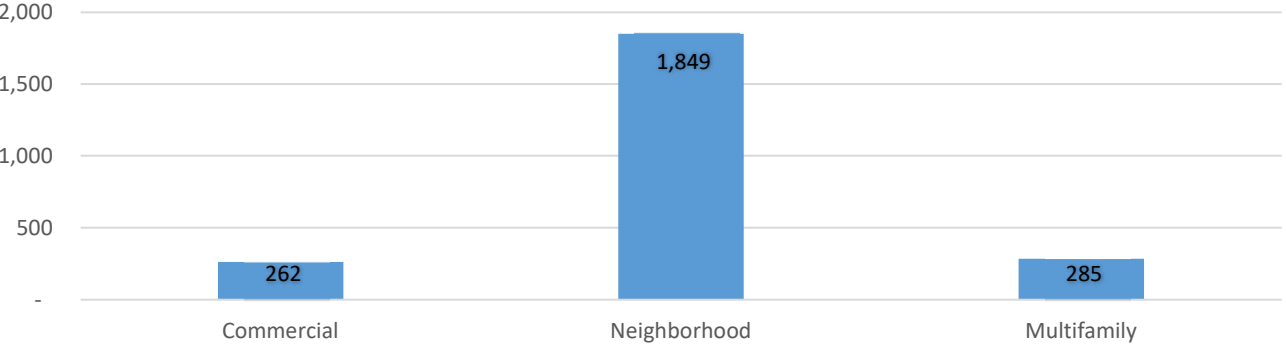
Complaint Case Types by Zoning Designation



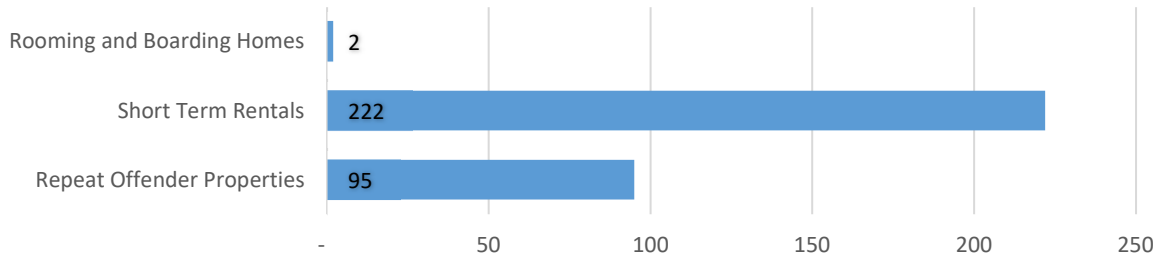
Complaint Cases by Complaint Type



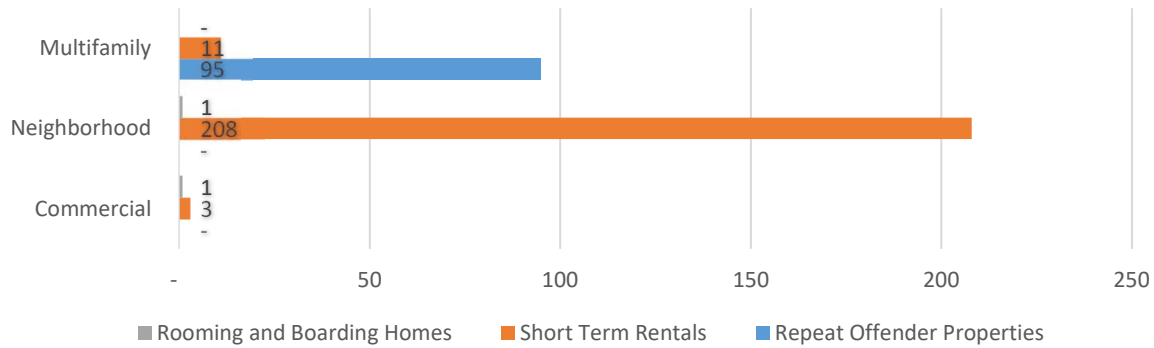
Complaint Cases by Zoning Designation



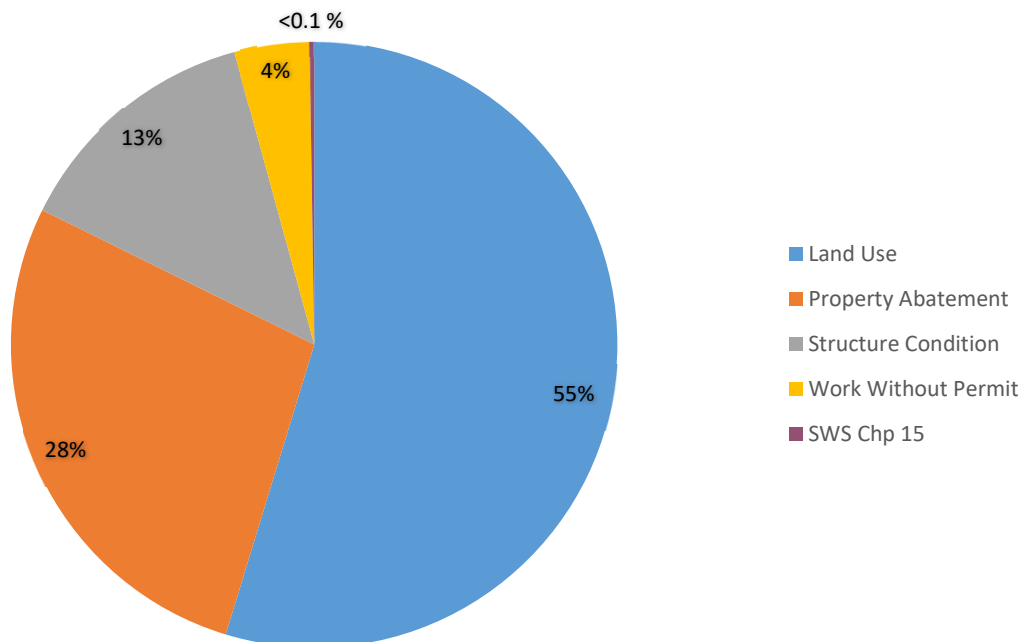
### Complaint Cases by Operating License Types



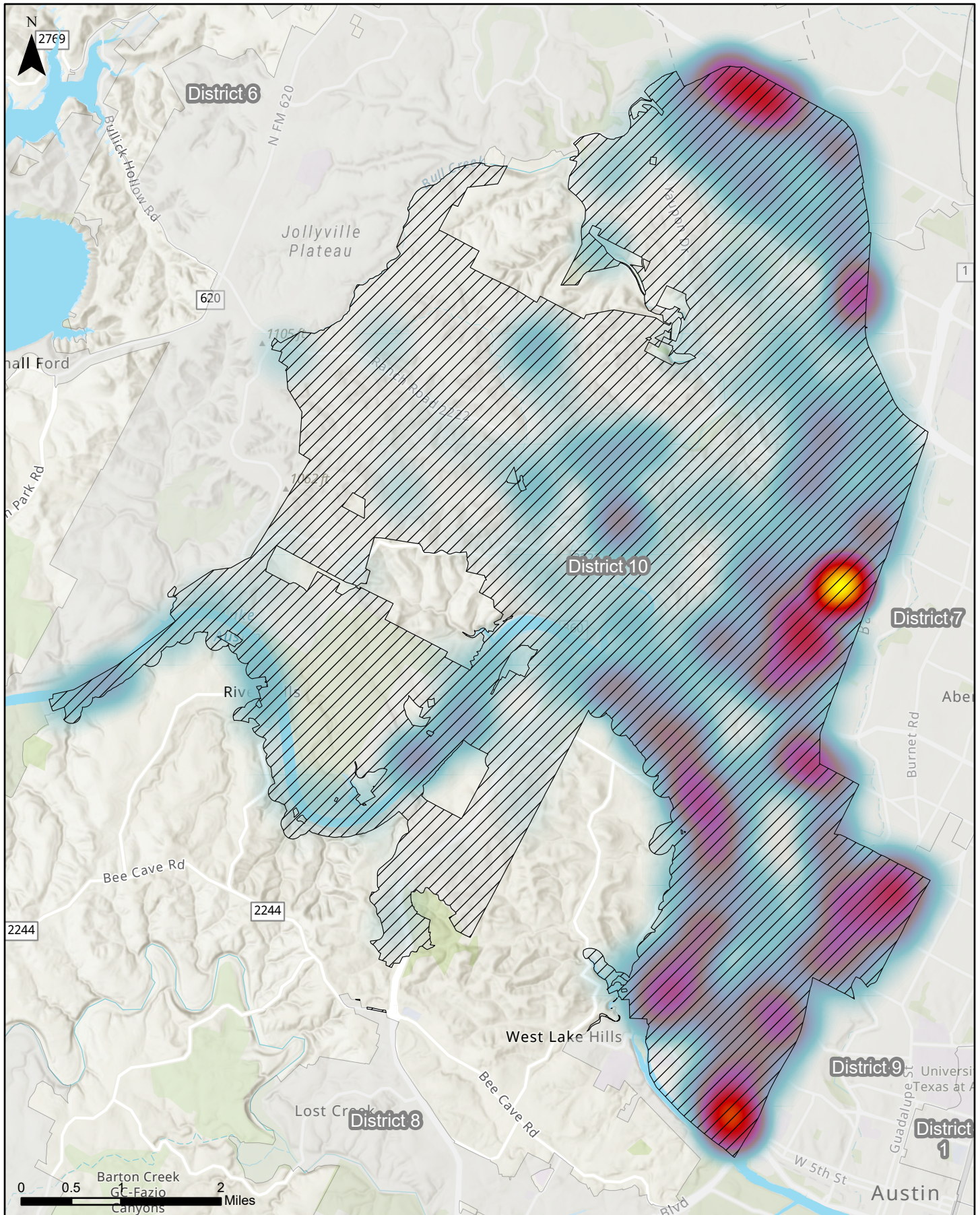
### Operating License Complaint Cases by Zoning Designation



### Operating License Complaint Case Types

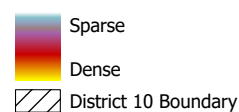


# Council District 10



This map examines the density of code cases opened in District 10 between October 1, 2019 and September 30, 2020. The total number of cases opened was 2,402.

Sources: AMANDA Case Management Database; GIS DM 2021



**AUSTIN**CODE  
DEPARTMENT

Map generated on:  
11/16/2021